

Prefit Rail Systems.



COOPER PREFIT RAIL SYSTEMS COMBINED WITH OUR PREASSEMBLED STAIRS ENABLE YOU TO REALIZE MANY COST EFFICIENCIES. NO MORE QUESTIONS ON WHAT PARTS TO USE, WHERE TO FIND THEM OR HOW THEY GO TOGETHER. SIMPLY SELECT ANY STOCK OR CUSTOM STYLE BALUSTRADE AND OUR PROFESSIONAL STAIR BUILDERS WILL CONFIGURE THE CORRECT PARTS AND ACTUALLY PREFIT THEM TO YOUR STAIR WHILE IT IS IN OUR SHOP.

PREASSEMBLED STAIRS AND PRE-FIT RAIL SYSTEMS

COOPER STAIRWORKS pre-fit rail systems are shop fitted to Cooper preassembled stairs. The combination of these two products eliminates countless hours of on-site carpentry and assures that the final product will be constructed using time tested stair building techniques and the best quality materials available. The use of our staircase products will help you maintain design integrity at substantial savings over other methods. Add value to your next project, incorporate our high quality and expertise, specify Cooper Stairworks.



Post is notched for exact location and height.



Stair is notched for post.



Treads are drilled for balusters, and inserts are installed.



One end of rail is precut for quick field installation with post to post rail systems. Opposite end is cut to fit in field.



Rake rails on stair are drilled for easy baluster insertion, up into rail and down into tread.

FREQUENTLY ASKED QUESTIONS

WHEN DO I START?

Contact us at the beginning of the design phase. This is when you have the most options available and our expertise can be most helpful. We will meet your design requirements and value engineer your project. The longer you wait the more you limit your options or create unusual and costly framing changes.

HOW DO I START?

Send us a copy of your plans in the area of the stair at each level and provide the height from floor to floor. You may request literature or view our website, www.CooperStairworks.com, for our offerings to consider your rail and baluster preferences. Our Stair Quotation form (online) will guide you through the planning process. We will send you a quotation for the complete stair system with your choice of balustrade or one we have recommended to meet your budget.

HOW DO I ORDER?

Simply approve the quotation. We will finalize the details and send a contract for you to sign. A shop drawing will follow for approval and if you are within reach of our serviced areas, a field technician will confirm field dimensions. If you have purchased a curved stair system we provide the curved wall plates, curved floor templates and a positioning diagram to coordinate the fit of the stair system while framing. This allows you to complete most of the framing and wall finish prior to taking delivery of the stair and rail system.

WHEN DOES THE STAIR ARRIVE?

Once the job is weather tight, the stair and rail system will be delivered. The stair will be wrapped with six-mil polyethylene wrap and tread guards will be applied to protect the stair from jobsite traffic. When ready the protective wrap can be turned back and the rail system unpacked and applied.

WE ALSO OFFER COMPLETE INSTALLATION IN OUR SERVICE AREA. SEE YOUR SALES REPRESENTATIVE FOR DETAILS.

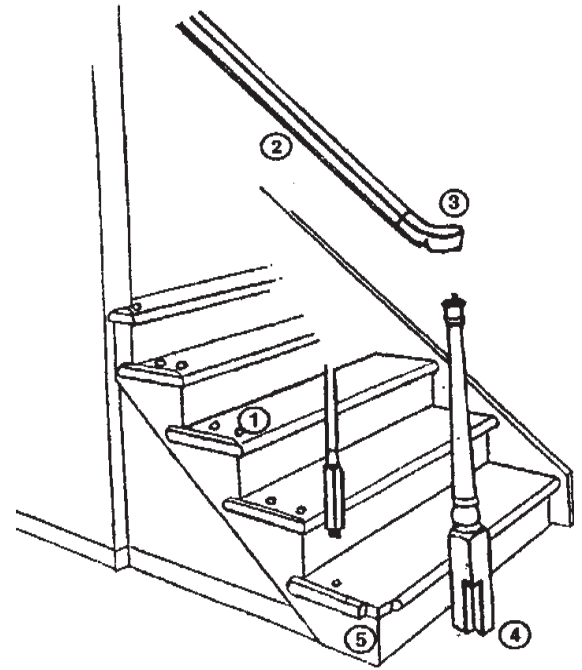
PRE-FIT RAIL SYSTEMS

All Rail Systems are manufactured to exact jobsite dimensions using:

- Cooper Preassembled Stairs
- Virtually any possible combination of stock or special order posts, rails, and balusters
- Post to Post or Over the Post Systems

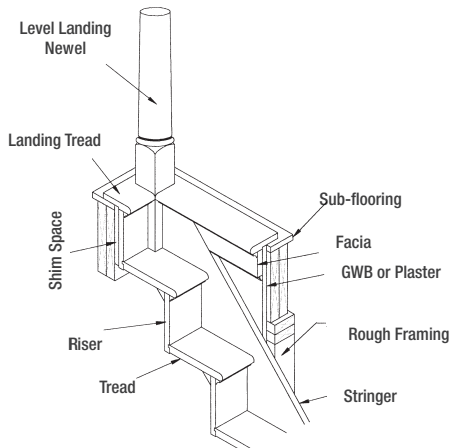
Ask your sales rep how to get a quote

1. TREADS DRILLED FOR BALUSTER
2. PITCH RAIL DRILLED FOR BALUSTER
3. RAIL FITTINGS APPLIED
4. KNOTCHED NEWELS
5. KNOTCHED STAIR TO ACCEPT NEWEL

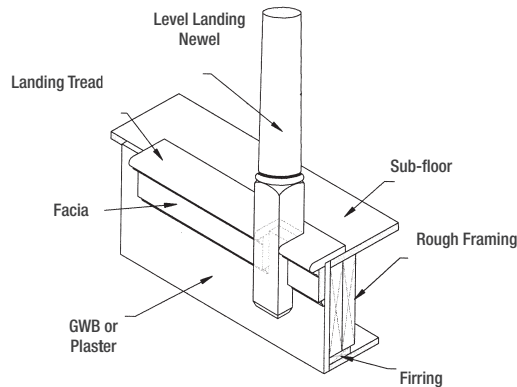


NEWEL POST KNOTCHING CHARGES	STANDARD LOCATION	3 - 3-1/2"	4 - 5-1/2"	5 - 1/2"
	Drilled Starting Newel	--	--	--
	Knotted Starting Newel	--	--	--
	Rake to Rake	--	--	--
	Rake to Level	--	--	--
	Level Only	--	--	--
Drill rake rail and treads 2 balusters for tread			--	
Drill rake rail and treads 3 balusters for tread			--	
Drill Treads only			--	
Rail fittings applied	Rake fitting applied 1 joint		--	
Rail fittings applied	Level fitting applied 1 joint		--	

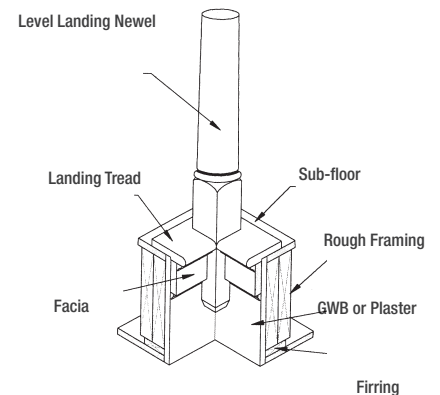
Typical Balcony Posts Knotted Posts are knotted to be located as shown. Facia and landing tread are then field fitted around post "locking" it into position.



End Newel



Intermediate Newel



Corner Newel



Cooper *stairworks*



WWW.COOPERSTAIRWORKS.COM



Wholesale Doors
COMMERCIAL DIVISION

1255B Grand Army Highway, Somerset, MA 02726

PHONE 800-899-4533

2049 Silas Deane Highway, Suite 1A, Rocky Hill, CT 06067

PHONE 800-486-7600

120 Defreest Drive, Suite 19 (Rensselaer Technology Park), Troy, NY 12180

PHONE 800-350-0448

WHOLESALE DOORS

220 Forbes Road, Suite 403, Braintree, MA 02184

PHONE 800-225-4252

For our complete offering of stair parts, preassembled stairs,
and other products and services, please visit our website:

WWW.CLEARYMILLWORK.COM